



# SIGNAL SNOWBOARDS

CATALOG 25/26



# RIDER-DRIVEN, INDEPENDENT SNOWBOARDING

SMALLER THAN MOST,  
BIGGER HEART &  
A TESTAMENT TO BUILDING COMMUNITY.

## OUR STORY

Looking back on the journey, it's both humbling and inspiring to think about all the people—friends, riders, and collaborators—who have been part of our story. From our biggest achievements to the toughest moments, they've all strengthened our love for snowboarding and what we do.

We founded Signal in 2005 around a kitchen table with one simple mission: to build a brand based on real, authentic connection. That focus on community has been the key to our independence as a rider-owned and operated company. We show up, push the limits, and carve our own path in the snowboarding world.

Over the past two decades<sup>+1</sup>, we've stayed committed to quality craftsmanship, innovative design, and content that inspires creativity. We're proud to have sparked a movement, inspiring the next gen-

eration to become builders, engineers, and creators—showing that snowboarding is about more than just riding. We've also had the privilege of supporting incredible pro riders, taking them all the way to the world stage, including the Olympics.

As we celebrate 21 years, we look back on our rich history, but we're even more excited about the future. We're a small, tight-knit team, which means we're accessible, engaged, and ready to fine-tune our products to suit you, the rider.

In an industry that's constantly evolving, Signal continues to stand strong. Our ability to adapt and innovate keeps us at the forefront of snowboarding culture.

Here's to future connections—let's ride!





No. 026  
STAY CONNECTED  
2026

SIGNAL SNOWBOARDS  
SOUTHERN CALIFORNIA,  
USA

T. (714) 707-6046

frontdesk@signalsnowboards.com  
www.signalsnowboards.com

facebook.com/signalsnow  
instagram.com/signalsnowboard  
youtube.com/signalsnowboard

©2026 Signal Snowboards  
Signal Snowboards reserves the  
right to improve, change, or modify  
any product at any time.

---

# CONTENT

OUR STORY	02
TEAM	04
LINE OVERVIEW	08
SNOWBOARDS	10





WELCOME

# PRO



YUKI KADONO

Location: Jackson Hole, WY



KYLE MACK

Location: Silverton, CO

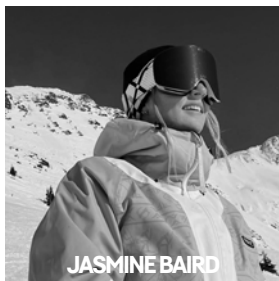




# TEAM



JAKE AARONSON



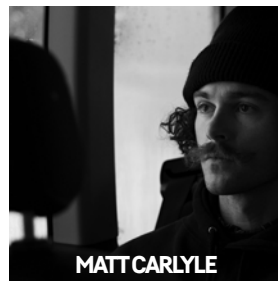
JASMINE BAIRD



DEMETRI BALES



CALI CARLSON



MATT CARLYLE



JESSE GOMEZ



MIKE GRAY



KEONI KAIMULOA



JEFF KRAMER



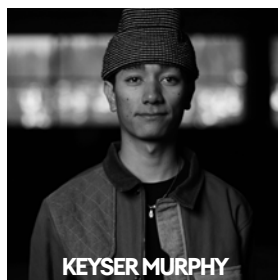
KOLMAN LECROY



MYRIE METZGER

## AM SQUAD

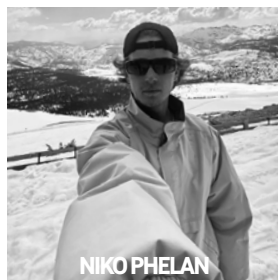
RYAN SIHLER  
ASHER DOLMAN  
CODY HALLQUIST  
EZRA BLAZE



KEYSER MURPHY



SEAN MURPHY



NIKO PHELAN

## ARTISTS

MITCH DELANEY  
CRYSTAL LEGOFFE  
JOHN GAROUTTE  
TAYLOR SCHULZ  
RYO SEJIRI  
HUNTER FREESE



CAUSE A LITTLE

CHAOS

ALONG THE WAY





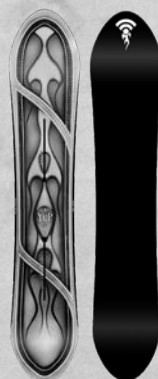


# ALL MOUNTAIN

## FREESTYLE

## POWDER

YUP



LUDO



DISRUPTOR



COMPASS



PARK SERIES



YUKI PRO



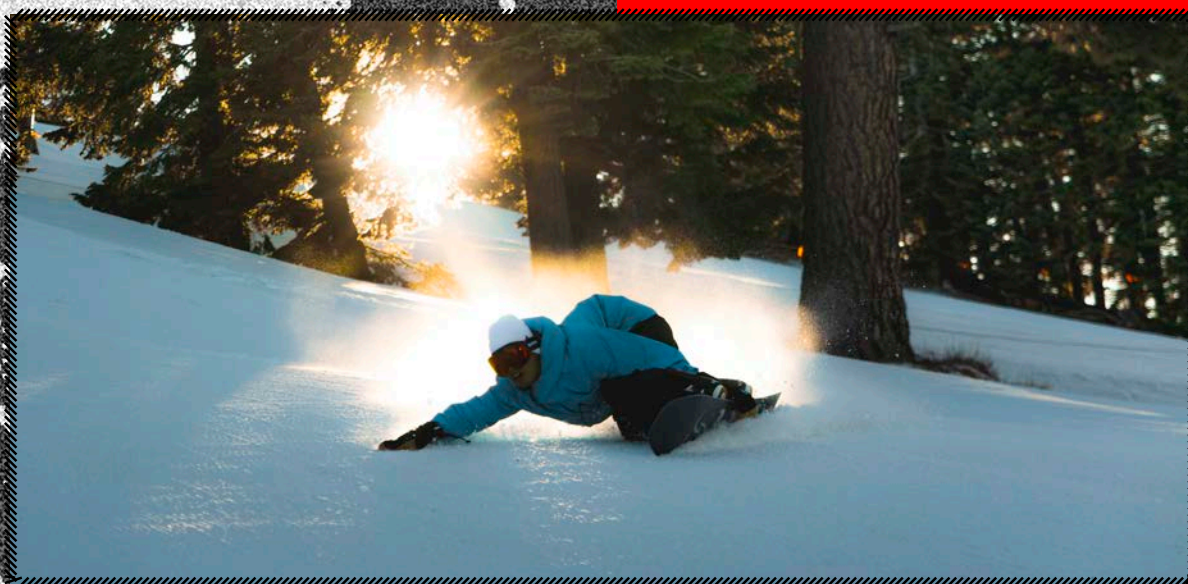
AMBIENT



PARK PRO











## PARK SERIES

**TRIED & TRUE PROGRESSION FRIENDLY SOFT CAMBER.**  
The Award-Winning Park Series is a staple for riders who want a softer flexing board without sacrificing edge hold. Great for beginners and experienced snowboarders alike! Rule the park, maneuver on a dime & progress your riding to the next level without breaking the bank.

ARTIST	MITCH DELANEY
FLEX	3/10
SHAPE	True Twin
SIZE (CM)	138, 142, 146, 150, 152, 154, 156, 158

### CONSTRUCTION

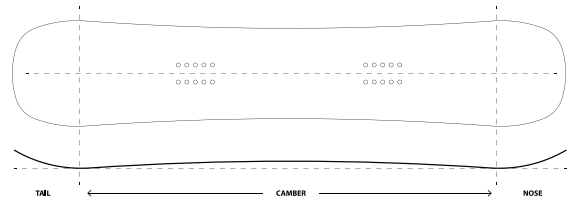
BASE	Lightning Fast Isosport 7500 Sintered Base
BASE GLASS	Super Pop Triaxial Fiberglass
SIDE WALL	Urethane IRT
TOP GLASS	Super Pop Triaxial Fiberglass
CAMBER TYPE	Kick Ass Camber
CORE MATERIAL	Poplar

### TERRAIN

PARK	////////
POWDER	//////
STREET	////////
BACKCOUNTRY	//////
ALL MOUNTAIN	//////

### CAMBER

#### KICK ASS CAMBER



LENGTH	EFFECTIVE EDGE (CM)	TIP/TAIL LENGTH	TIP/TAIL WIDTH	WAIST WIDTH	STANCE SETBACK (IN)
138	100	18.9 / 18.9	26.4 / 26.4	22.6	0
142	103	19.5 / 19.5	27.1 / 27.1	23.2	0
146	106.4	19.8 / 19.8	27.9 / 27.9	23.8	0
150	109.6	20.2 / 20.2	28.6 / 28.6	24.5	0
152	111.6	20.4 / 20.4	29.0 / 29.0	25.1	0
154	112.8	20.6 / 20.6	29.4 / 29.4	25.2	0
156	114	21 / 21	29.8 / 29.8	25.5	0
158	115.2	21.4 / 21.4	30.2 / 30.2	25.8	0







# AMBIENT

**PLAYFUL PARK PERFORMANCE AND VERSATILITY.** By popular demand, the 25/26 Ambient now mimicks our beloved Platinum model - in a new range of female-focused sizing. The Ambient has emerged as a finely tuned resort ripper crafted by dedicated riders with a passion for daily progression. Whether you're carving, slashing, jumping, or jibbing - this is your one stop shop for all-terrain versatility.

ARTIST	CRYSTAL LEGOFFE
FLEX	5/10
SHAPE	True Twin
SIZE (CM)	138, 140, 142, 144, 146, 150

## CONSTRUCTION

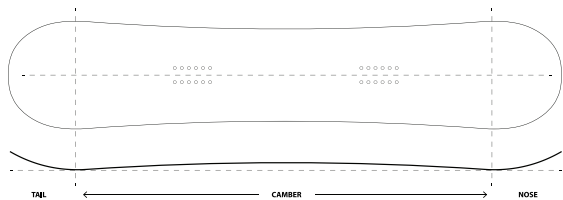
BASE	Lightning Fast Isosport 7500 Sintered Base
BASE GLASS	Super Pop Triaxial Fiberglass
SIDE WALL	Urethane IRT
TOP GLASS	Super Pop Triaxial Fiberglass
CAMBER TYPE	Kick Ass Camber
CORE MATERIAL	Poplar

## TERRAIN

PARK	////////
POWDER	////////
STREET	////////
BACKCOUNTRY	////////
ALL MOUNTAIN	////////

## CAMBER

KICK ASS CAMBER



LENGTH	EFFECTIVE EDGE (CM)	TIP/TAIL LENGTH	TIP/TAIL WIDTH	WAIST WIDTH	STANCE SETBACK (IN)
138	100	18.9 / 18.9	26.4 / 26.4	22.6	0
140	101.5	19.2 / 19.2	26.8 / 26.8	22.9	0
142	103	19.5 / 19.5	27.1 / 27.1	23.2	0
144	104.6	19.7 / 19.7	27.5 / 27.5	23.5	0
146	106.4	19.8 / 19.8	27.9 / 27.9	23.8	0
150	109.6	20.2 / 20.2	28.6 / 28.6	24.5	0









## PARK PRO

**TEAM-APPROVED CLASSIC TWIN WITH A BUTTERY YET STABLE FREESTYLE FEEL.** Traditional camber throughout, with a thinner tip & tail profile for reduced swing weight and immaculate presses. The Park Pro is your go-to park destroyer, from jibs to large jumps. There's no denying this favorite ride amongst our team. Boost your progression in the park - daily.

ARTIST	MITCH DELANEY
FLEX	6/10
SHAPE	True Twin
SIZE (CM)	149, 151, 151W, 153, 153W, 155, 155W, 157W, 160W

### CONSTRUCTION

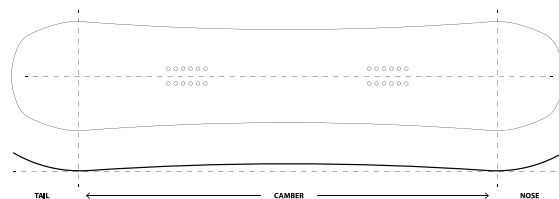
BASE	Lightning Fast Isosport 7500 Sintered Base
BASE GLASS	Super Pop Triaxial Fiberglass
SIDE WALL	Urethane IRT
TOP GLASS	Super Pop Triaxial Fiberglass
CAMBER TYPE	Kick Ass Camber
CORE MATERIAL	Poplar

### TERRAIN

PARK	////////
POWDER	////////
STREET	////////
BACKCOUNTRY	////////
ALL MOUNTAIN	////////

### CAMBER

#### KICK ASS CAMBER

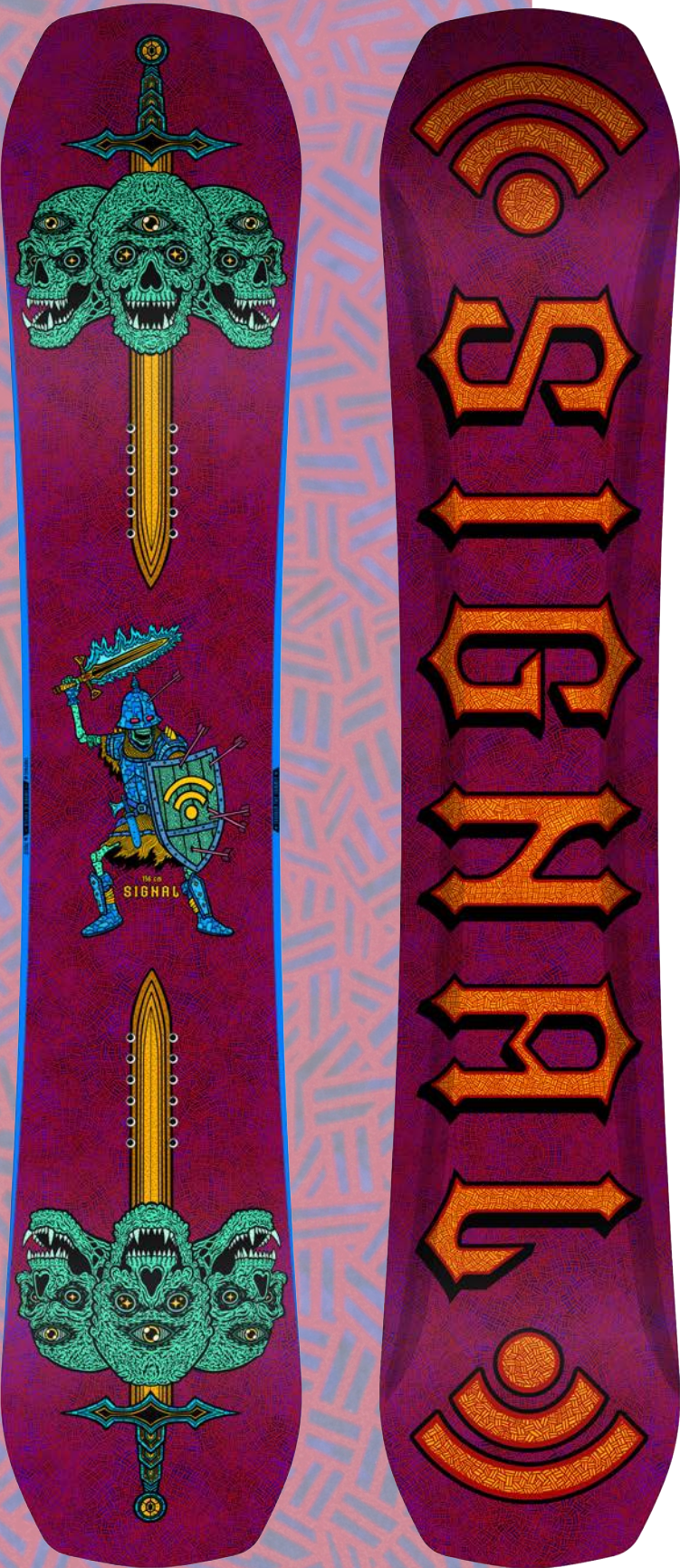


LENGTH	EFFECTIVE EDGE (CM)	TIP/TAIL LENGTH	TIP/TAIL WIDTH	WAIST WIDTH	STANCE SETBACK (IN)
149	113.4	17.8 / 17.8	29.5 / 29.5	25.1	0
151	114.9	18.0 / 18.0	29.9 / 29.9	25.4	0
151W	114.3	18.4 / 18.4	30.5 / 30.5	26	0
153	116.7	18.1 / 18.1	30.1 / 30.1	25.4	0
153W	116.1	18.5 / 18.5	30.6 / 30.6	26	0
155	118.3	18.3 / 18.3	30.4 / 30.4	25.7	0
155W	117.8	18.6 / 18.6	30.9 / 30.9	26.2	0
157W	119.5	18.7 / 18.7	31.1 / 31.1	26.3	0
160W	121.4	18.7 / 18.7	31.1 / 31.1	26.6	0









## COMPASS

**VERSATILITY MEETS PLAYFULNESS.** 3D base tech that makes sense. Exclusive to Signal - this 3D-milled core and construction was developed with OG snowboard engineer Jason Kanes. A fun, fluid ride in both park and powder - the Compass is rapidly becoming a favorite for all riders and team alike. Catch-free on the rails, carbon-forged precision on edge and ultra nimble in softer snow. Point in any direction - and just go with the Compass.

**ARTIST** HUNTER FREESE

**FLEX** 6/10

**SHAPE** 3D Twin

**SIZE** 147, 153, 156

### CONSTRUCTION

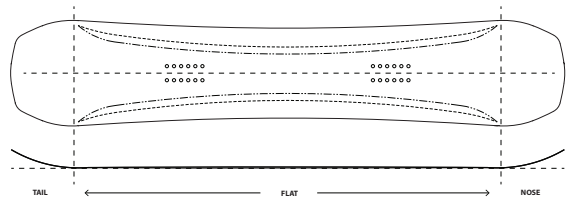
BASE	Lightning Fast Isosport 7500 Sintered Base
BASE GLASS	Super Pop Triaxial Fiberglass
SIDE WALL	Premium ABS/TPU
TOP GLASS	Super Pop Triaxial Fiberglass
CAMBER TYPE	3D Flat Camber
CORE MATERIAL	Paulownia w/Poplar Stringers

### TERRAIN

PARK	////////
POWDER	////////
STREET	////////
BACKCOUNTRY	////////
ALL MOUNTAIN	////////

### CAMBER

3D FLAT CAMBER

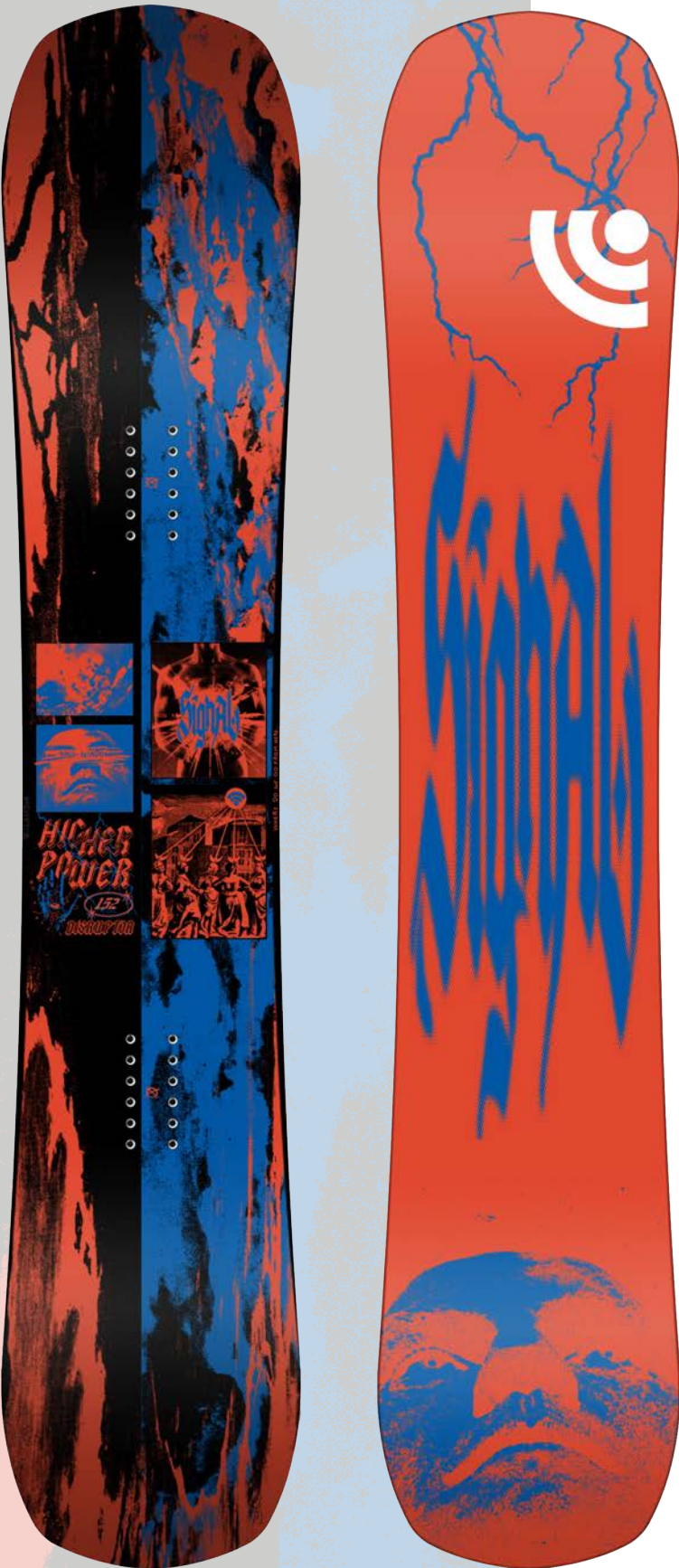


LENGTH	EFFECTIVE EDGE (CM)	TIP/TAIL LENGTH	TIP/TAIL WIDTH	WAIST WIDTH	STANCE SETBACK (IN)
147	116	18.0 / 18.0	29.1 / 29.1	25.2	0
153	119	19.0 / 19.0	29.5 / 29.5	25.5	0
156	120.2	19.0 / 19.0	29.6 / 29.6	25.8	0









## DISRUPTOR

**CONQUER ALL MOUNTAIN TERRAIN WITH EASE AND CONFIDENCE.** The Disruptor features a Medium-Stiff flex, bold blunted shape and poppy camber. Our quintessential “quiver killer” - one board to rule them all. Free-style inspired yet reliably stable at ripping speeds. Boat-loads of pop. Burly and rugged, the Disruptor is a genre bender - disrupting the need for too many quiver boards. Let there be one.

ARTIST	MITCH DELANEY
FLEX	7/10
SHAPE	True Twin
SIZE [CM]	148, 152, 154, 156, 156W, 158, 158W

### CONSTRUCTION

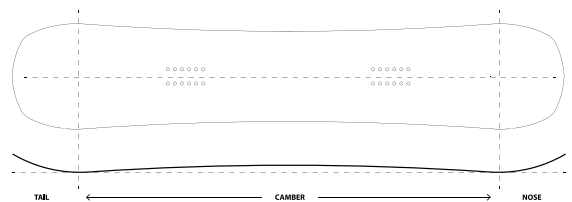
BASE	Lightning Fast Isosport 7500 Sintered Base
BASE GLASS	Super Pop Triaxial Fiberglass
SIDE WALL	Premium ABS/TPU
TOP GLASS	Super Pop Triaxial Fiberglass
CAMBER TYPE	Kick Ass Camber
CORE MATERIAL	Poplar

### TERRAIN

PARK	////////
POWDER	////////
STREET	////////
BACKCOUNTRY	////////
ALL MOUNTAIN	////////

### CAMBER

KICK ASS CAMBER



LENGTH	EFFECTIVE EDGE (CM)	TIP/TAIL LENGTH	TIP/TAIL WIDTH	WAIST WIDTH	STANCE SETBACK (IN)
148	108.4	19.8 / 19.8	28.4 / 28.4	24.5	0
152	111.8	20.1 / 20.1	28.8 / 28.8	24.8	0
154	113.2	20.4 / 20.4	29.2 / 29.2	25.1	0
156	114.8	20.6 / 20.6	29.6 / 29.6	25.4	0
156W	114.8	20.6 / 20.6	30.2 / 30.2	26.1	0
158	116.2	20.9 / 20.9	30 / 30	25.8	0
158W	116.2	20.9 / 20.9	31 / 31	26.8	0









# YUKI

**DIRECTIONAL TWIN, TECH & ALL-MOUNTAIN DRIVEN.**  
 The Yuki is a Directional Twin All-Mountain Freestyle board built for peak performance in any condition. Featuring explosive camber pop and a lightweight design, it's equipped with Signal's proprietary Omni Potent Powerglass and an internal dampening system for a smooth ride. The Channel System lets you fine-tune your stance for every type of snow with precision. More than just a board, the Yuki is a finely crafted shred tool, designed by the legend himself to deliver unbeatable performance.

ARTIST	RYO SEJIRI
FLEX	8/10
SHAPE	Directional Twin
SIZE (CM)	154, 156, 156W, 158, 158W, 162W

## CONSTRUCTION

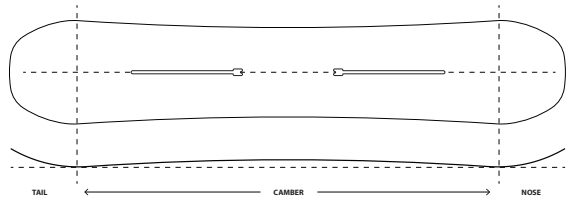
BASE	Lightning Fast Isosport 7500 Sintered Base
BASE GLASS	Omnipotent Power Glass
SIDE WALL	Premium ABS/TPU
TOP GLASS	Omnipotent Power Glass
CAMBER TYPE	Kick Ass Camber
CORE MATERIAL	Lightweight Paulownia & Balsa w/ Internal Dampening System

## TERRAIN

PARK	////////
POWDER	////////
STREET	////////
BACKCOUNTRY	////////
ALL MOUNTAIN	////////

## CAMBER

KICK ASS CAMBER



LENGTH (CM)	EFFECTIVE EDGE (CM)	TIP/TAIL LENGTH	TIP/TAIL WIDTH	WAIST WIDTH	STANCE SETBACK (IN)
154	115.8	17.8 / 17.8	28.8 / 28.8	25.0	-1
156	117.3	18 / 18	29.4 / 29.4	25.1	-1.5
156W	117.3	18 / 18	30.9 / 30.9	26.5	-1.5
158	118.8	18.2 / 18.2	29.4 / 29.4	25.4	-1.5
158W	118.8	18.2 / 18.2	30.8 / 30.8	26.7	-1.5
162W	123.8	19.1 / 19.1	30.8 / 30.8	26.7	0







## LUDO

**DEEP CARVES AND SIDE HITS.** This wide, wild directional ride is built for natural features, all-mountain terrain, and powder. Enjoy unbeatable float in the deep stuff, paired with the stability to carve sharp euro turns on groomers. Directional, yet effortlessly rideable switch, with poppy camber to keep the fun going. Let the party begin!

ARTIST	JOHN GAROUTTE
FLEX	7/10
SHAPE	Directional
SIZE (CM)	150, 154, 158, 162

### CONSTRUCTION

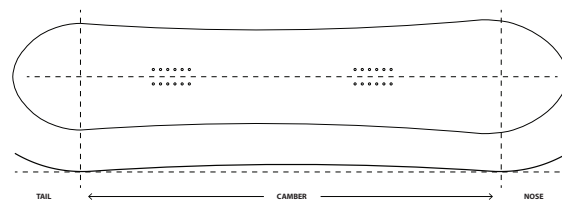
BASE	Lightning Fast Isosport 7500 Sintered Base
BASE GLASS	Super Pop Triaxial Fiberglass
SIDE WALL	Premium ABS/TPU
TOP GLASS	Super Pop Triaxial Fiberglass
CAMBER TYPE	Kick Ass Camber
CORE MATERIAL	Poplar

### TERRAIN

PARK	////////
POWDER	////////
STREET	////////
BACKCOUNTRY	////////
ALL MOUNTAIN	////////

### CAMBER

#### KICK ASS CAMBER



LENGTH	EFFECTIVE EDGE (CM)	TIP/TAIL LENGTH	TIP/TAIL WIDTH	WAIST WIDTH	STANCE SETBACK (IN)
150	107	23.8 / 18.8	31.0 / 29.0	25.8	-2.5
154	111	23.8 / 18.8	31.6 / 29.6	26.0	-2.5
158	115	23.8 / 18.8	31.6 / 29.6	26.5	-2.5
162	119	23.8 / 18.8	31.6 / 29.6	26.7	-2.5







## YUP 2.0

**A directional powerhouse built for all-mountain domination and carving precision.** The magic is in the construction, where expert craftsmanship fuses with innovative engineering, utilizing the finest and fastest materials. Glide with ease on its premium base, carve effortlessly with the tapered directional sidecut, and admire the beautifully sculpted shape that makes the Yup a true masterpiece. Elevate your ride with the Channel System, offering micro-adjustable stance tweaks for every snow condition. Go fast, dominate groomers, crush powder, and enjoy unbeatable edge control with the Yup.

ARTIST	TAYLOR SCHULTZ
FLEX	7/10
SHAPE	Directional
SIZE	153, 157, 161

### CONSTRUCTION

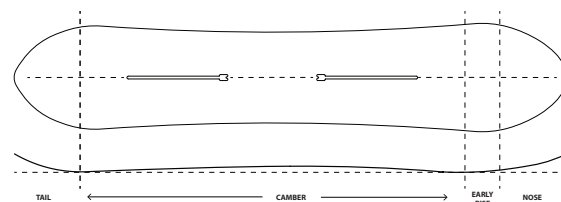
BASE	Lightning Fast Isosport 7500 Sintered Base
BASE GLASS	Super Pop Triaxial Fiberglass w/ Carbon Stringers
SIDE WALL	Premium ABS/TPU
TOP GLASS	Omnipotent Power Glass
CAMBER TYPE	Kick Ass Camber w/ Early-Rise Nose
CORE MATERIAL	Paulownia w/ Poplar Stringers

### TERRAIN

PARK	//////////
POWDER	//////////
STREET	//////////
BACKCOUNTRY	//////////
ALL MOUNTAIN	//////////

### CAMBER

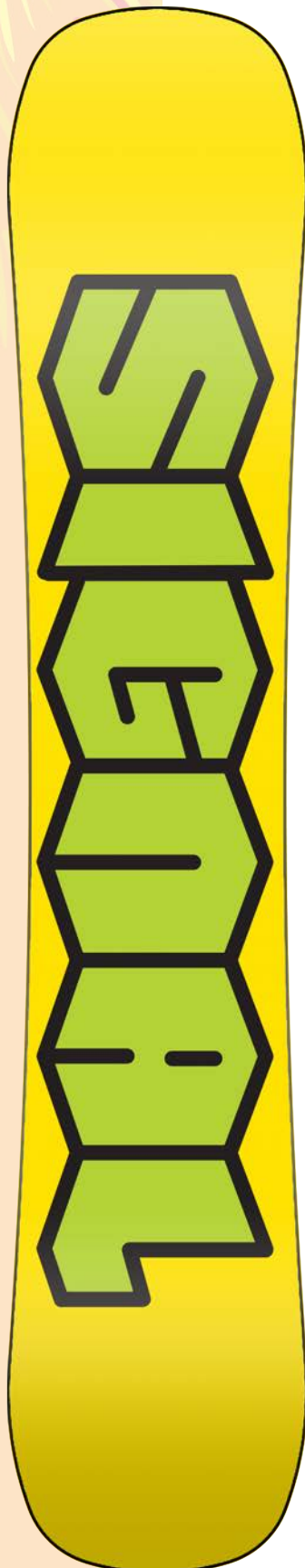
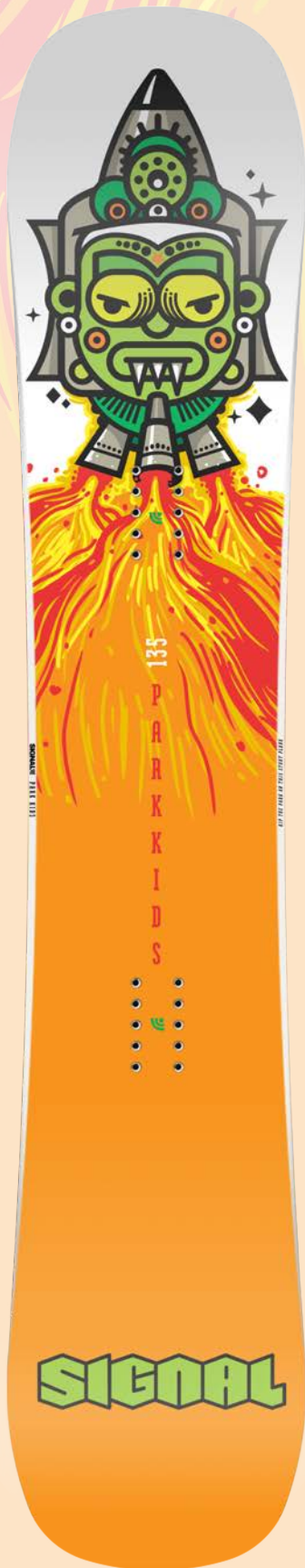
KICK ASS CAMBER w/ EARLY-RISE NOSE



LENGTH	EFFECTIVE EDGE (CM)	TIP/TAIL LENGTH	TIP/TAIL WIDTH	WAIST WIDTH	STANCE SETBACK (IN)
153	107	22.5 / 22.4	30.0 / 28.7	25.1	-4.6
157	110	24.1 / 23.0	30.8 / 29.4	25.8	-5.2
161	113	24.7 / 23.6	31.6 / 30.2	26.4	-5.0







## PARK KIDS

**Not your average grom board!** The soft flex, regular camber, and early-rise tip and tail deliver unbeatable progression. Crafted with the same high-quality materials and construction as our adult boards, just in a smaller size. 90cm and 100cm feature a rounded shape, while 110cm and up come with a blunted shape.

ARTIST	ANDY JENKINS
FLEX	4/10
SHAPE	True Twin
SIZE	90, 100, 110, 115, 125, 135

### CONSTRUCTION

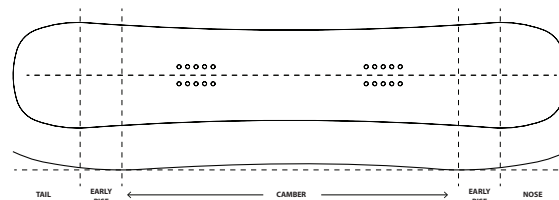
BASE	Lightning Fast Isosport 7500 Sintered Base
BASE GLASS	Super Pop Triaxial Fiberglass
SIDE WALL	Premium ABS/TPU
TOP GLASS	Super Pop Triaxial Fiberglass
CAMBER TYPE	Kick Ass Camber
CORE MATERIAL	Poplar

### TERRAIN

PARK	////////
POWDER	////////
STREET	////////
BACKCOUNTRY	////////
ALL MOUNTAIN	////////

### CAMBER

KICK ASS CAMBER w/ EARLY RISE NOSE AND TAIL



LENGTH	EFFECTIVE EDGE (CM)	TIP/TAIL LENGTH	TIP/TAIL WIDTH	WAIST WIDTH	STANCE SETBACK (IN)
90	56.0	17 / 17	20.2 / 20.2	18.2	0
100	66.0	17 / 17	21.2 / 21.2	19.0	0
110	74.0	18 / 18	24.4 / 24.4	21.5	0
115	79.0	18 / 18	25.5 / 25.5	22.5	0
125	87.0	19 / 19	26.4 / 26.4	23.2	0
135	97.0	19 / 19	27.6 / 27.6	24	0







**[WWW.SIGNALSNOWBOARDS.COM](http://WWW.SIGNALSNOWBOARDS.COM)**

SIGNAL SNOWBOARDS RESERVES THE RIGHT TO IMPROVE / MODIFY / CHANGE ANY PRODUCT AT ANYTIME.